

UNITED STATES PUBLIC LAND SURVEY CORNER CERTIFICATE FOR

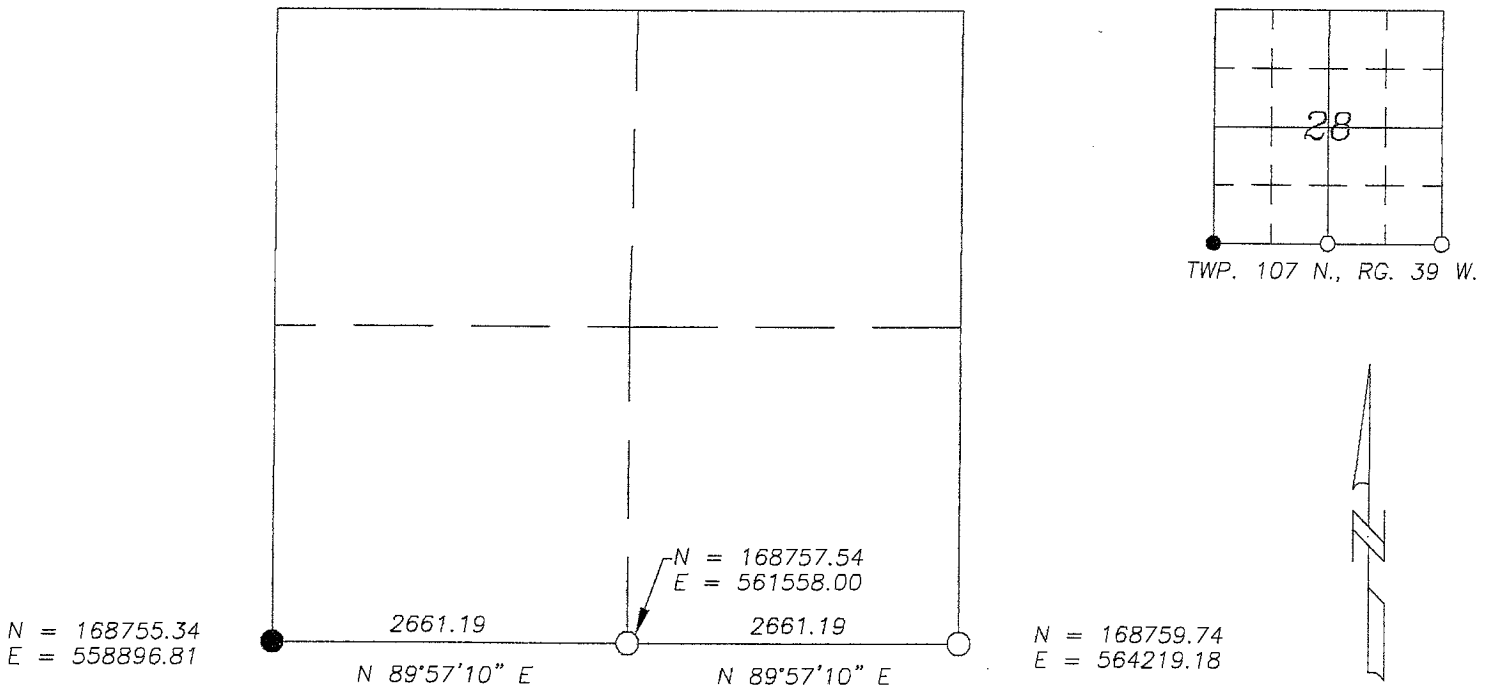
Land survey monuments situated in Section 28, Township 107 North, Range 39 West, of the Fifth Principal Meridian, Murray County, Minnesota..

Previously recorded in N/A in County Recorder's Office.

(Show reason for preparing this certificate, the evidence and detailed procedure used in establishing the corner position & monumentation found or placed.)
 MONUMENT DESCRIPTION AND REMARKS: On July 25, 2013 we dug for South 1/4 Corner with backhoe &

found no evidence of corner. County Highway surveyor record book shows a stone in 1904. We dug for SE
Corner with backhoe & found a 6" X 6" concrete monument 3.1' below surface near centerline intersection
of roads as per 1904 survey by J.W. Woolletencroft. I accepted concrete monument for SE corner & set a
5/8" Iron stake with survey cap 23008 over top center of concrete monument; I also set a 5/8" Iron
stake with survey cap 23008 for South 1/4 Corner midway & on line between SW & SE corner & at
Centerline Township Road in line with fence South. 1904 distances were 2662' both ways & we have
2661.19' both ways.

MURRAY COUNTY COORDINATES NAD-83 (2007) **PLAN-VIEW**



I hereby certify that this land survey, plan, or report was prepared by me and under my direct supervision and that I am a duly licensed Land Surveyor under the laws of the state of Minnesota.



Corners to be Indexed

Corners	Section	Township	Range
S 1/4	28	107	39
SE	28	107	39

Signature Perry L. Zieske Typed or Printed Name: Perry L. Zieske
 Date 7-31-13 Reg. No.: 23008